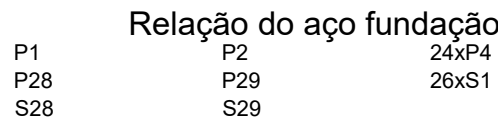
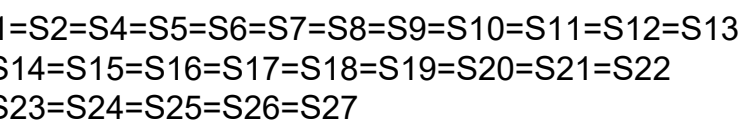
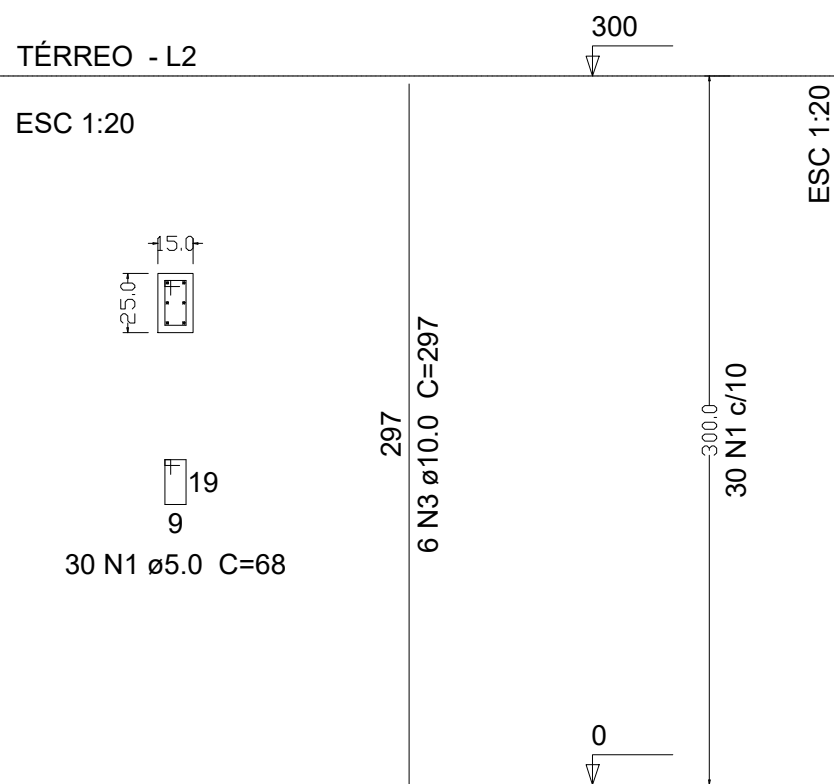
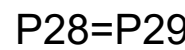
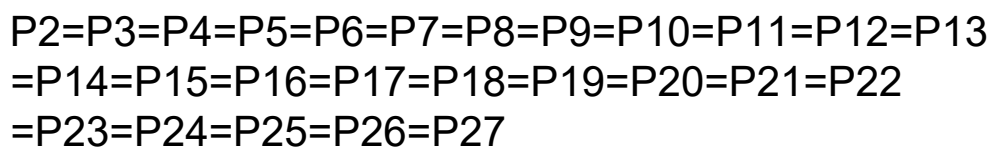
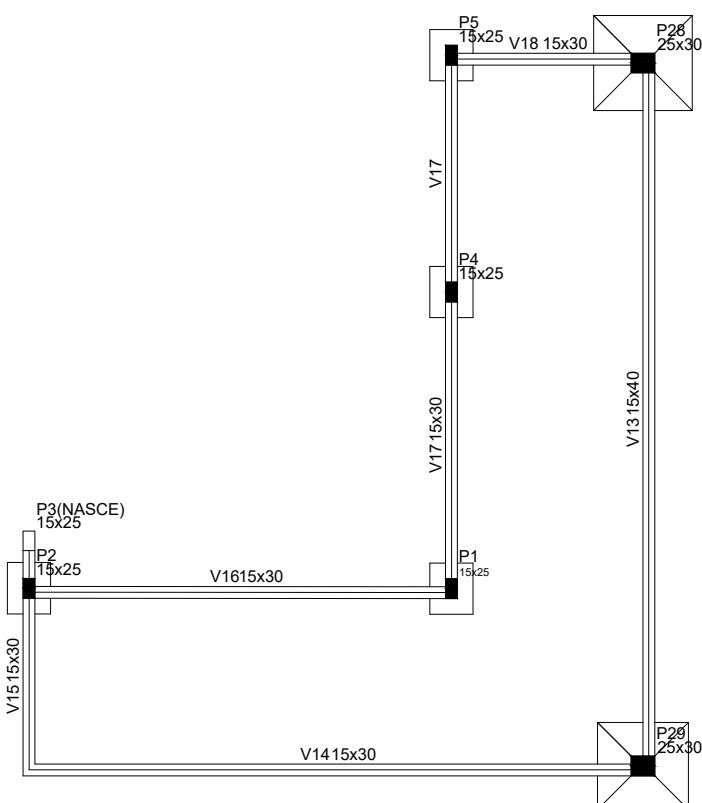
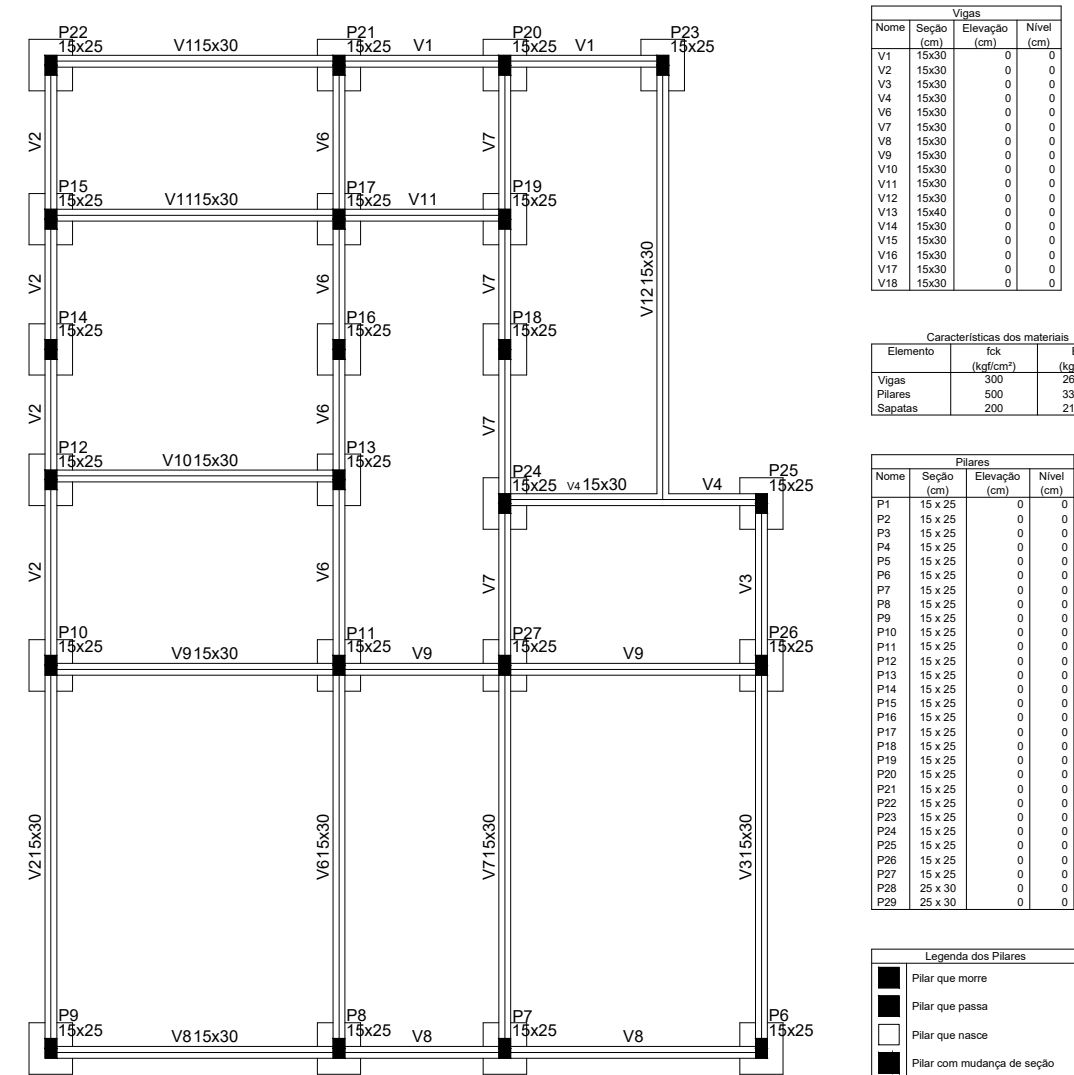


## PLANTA DE LOCAÇÃO

## PLANTA DE FORMA

SEM ESCALA

A schematic diagram of a T-joint. It consists of a vertical pipe (nozzle) welded to the top surface of a horizontal pipe (header). The dimension  $d$  is the total height from the bottom of the header to the top of the nozzle. The dimension  $h_1$  is the height of the nozzle. The dimension  $h_2$  is the height of the header. The nozzle is shown with a break symbol at the top.



Relação do aço fundação					
		P2	24xP4		
		P29	26xS1		
		S29			
AÇO	N	DIAM (mm)	QUANT (Barras)	UNIT (cm)	C.TOTAL (cm)
CA60	1	5.0	390	68	26520
CA50	2	5.0	40	98	3920
	3	6.3	156	78	12168
	4	6.3	156	68	13728
	5	6.3	13	68	1534
	6	8.0	9	112	1008
	7	8.0	12	122	1464
	8	8.0	12	127	1554
	9	10.0	14	165	2310
	10	10.0	122	192	23424

AÇO	DIAM (mm)	C.TOTAL (m)	PESO (kg)
CA50	6.3	274.3	67.1
	8.0	40	15.8
	10.0	257.4	158.7
CA60	5.0	304.4	46.9

PESO TOTAL (kg)	
CA50	241.5
CA60	46.9

Volume de concreto (C-30) = 4.64 m<sup>3</sup>  
Área de forma = 51.51 m<sup>2</sup>

### Relação do aço Pilar

P1		26xP2		2xP28	
AÇO	N	DIAM (mm)	QUANT (Barras)	UNIT (cm)	C.TOTAL (cm)
CA60	1	5.0	810	68	55080
	2	5.0	80	98	7840
CA50	3	10.0	126	297	37422

## Resumo do aço Pilar

AÇO	DIAM (mm)	C.TOTAL (m)	PESO (kg)
CA50	10.0	374.3	230.7
CA60	5.0	629.2	97

PESO TOTAL  
(kg)

Volume de concreto (C-30) = 3.49 m<sup>3</sup>  
Área de forma = 71.4 m<sup>2</sup>

